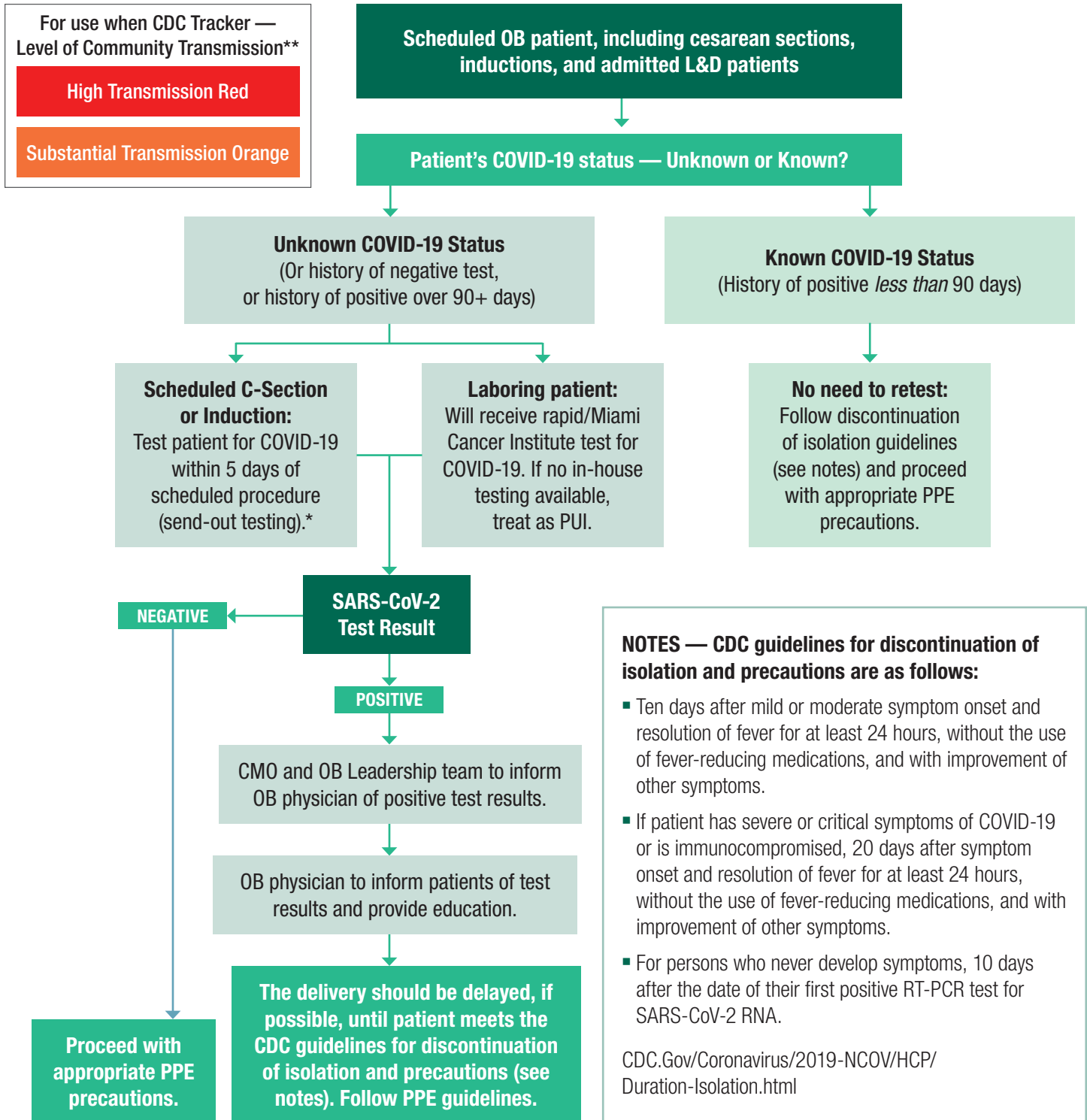


COVID-19 Testing Guidelines for OB and L&D Patients — Community Transmission High or Substantial



* In the event that test results are not received in time for a scheduled procedure, procedure will be placed on hold until results are available, when possible. If unable to delay, use in-house testing.

**CDC Tracker: [Covid.CDC.Gov/Covid-Data-Tracker/Index.html#Datatracker-Home](https://covid.cdc.gov/covid-data-tracker/index.html#Datatracker-Home)